

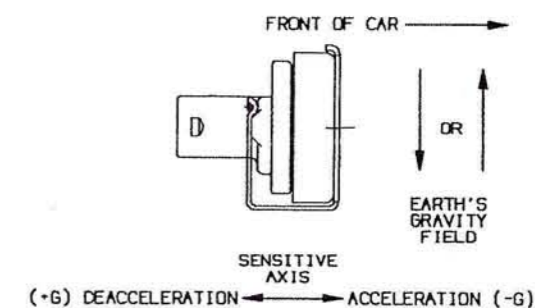
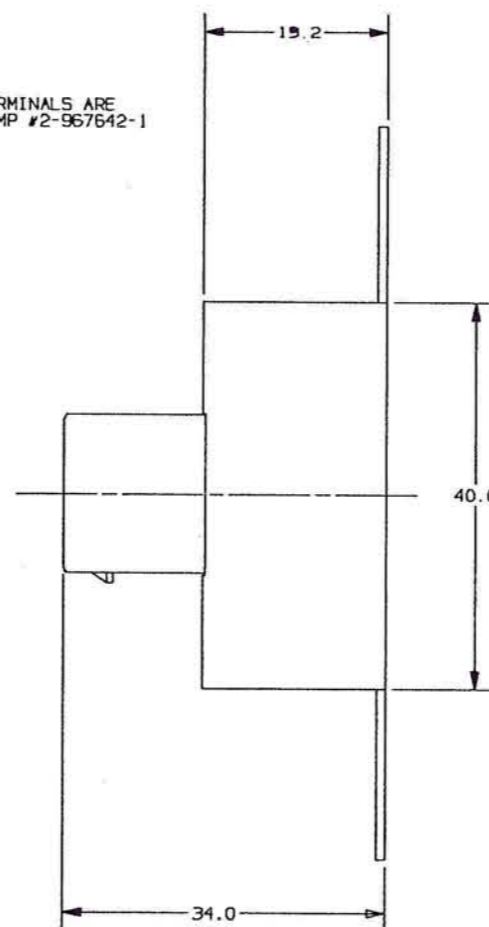
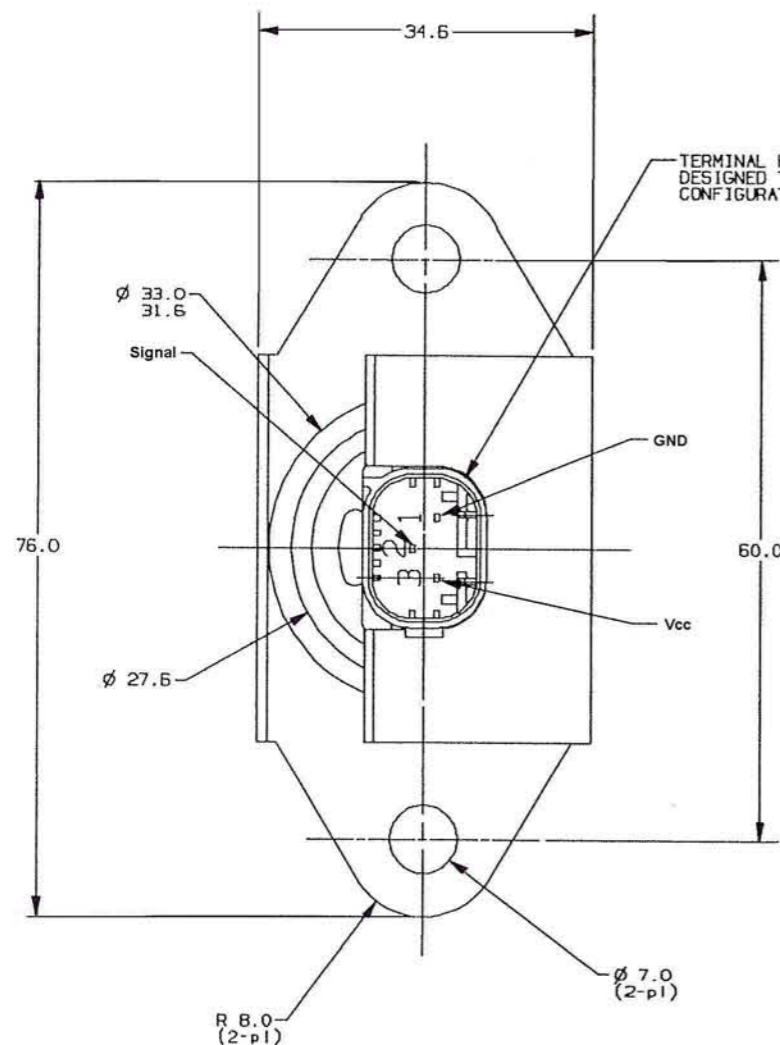
4

3

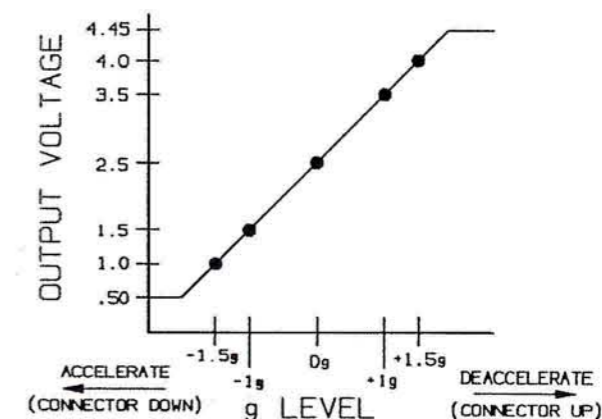
2

1

| REVISIONS | | | | |
|-----------|-----|-------------|------------|------|
| ZONE | LTR | DESCRIPTION | PROJ. 3426 | DATE |
| | | | | |
| | | | | |
| | | | | |

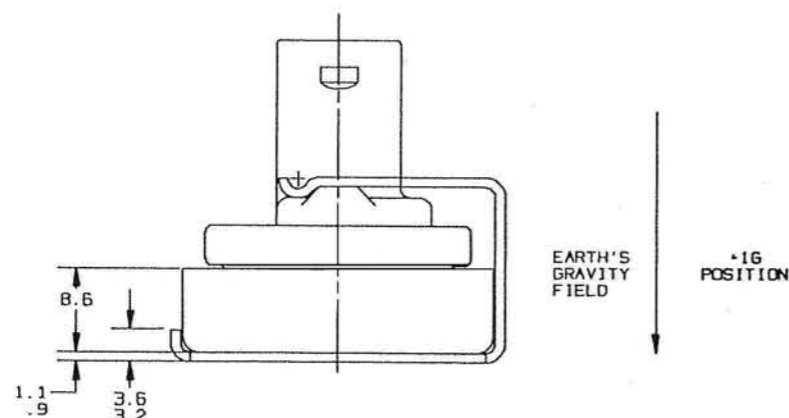


TYPICAL MOUNTED POSITION
NOMINAL OUTPUT CURVE


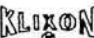


NOTES:

1. CUP MATERIAL TO BE C1008 STEEL WITH .008 mm MINIMUM ZINC PLATE WITH TRIVALENT CHROMATE.
2. TERMINAL MATERIAL TO BE TIN PLATED PHOSPHOR BRONZE CDA 511.
3. TERMINAL HOUSING MATERIAL TO BE NORYL GTX #830 COLOR BLACK.
4. PROTECTIVE SLEEVE NEOPRENE RUBBER - BLACK.
5. PERFORMANCE: PER SPECIFICATION ES-X24049.
6. INPUT VOLTAGE (Vcc) = 4.75 - 5.25 VOLTS.
7. OUTPUT VOLTAGE (Vo) RANGE = 0.50 - 4.45 VOLTS.
8. NOMINAL SENSITIVITY = 1.0 V/g.
9. RANGE = $\pm 1.5g$
10. OPERATING TEMPERATURE = -30° C TO +100° C.
11. DIMENSIONAL TOLERANCES, ± 0.5 mm UNLESS OTHERWISE SPECIFIED.



METRIC

| | | | | | | | | | | | | | | | | | |
|---|--|--|--|--|--|------------------|--|---|--|--|--|--|--|--|--|--|-----|
| THIS IS A CAD DRAWING. THE GEOMETRY IN THE ASSOCIATED CAD COMPUTER FILE IS DIMENSIONALLY ACCURATE. WHEN DRAWING IS BEING REVISED, THE GEOMETRY MUST BE UPDATED IN ALL VIEWS AND ON ALL SHEETS. | | | | | | | | | | | | | | | | | |
| | | | | | | | | | | | | | | | | | P18 |
| UNLESS OTHERWISE SPECIFIED DIMENSIONS ARE IN METRIC | | | | DRAWN PHIL FEDDEMA | | DATE 11-14-01 | |  TEXAS INSTRUMENTS ATTLEBORO, MASSACHUSETTS 02703 | | | |  KLIXON CONTROL PRODUCTS DIVISION | | | | | |
| | | | | ENGINEER TOM PERKINS | | 11-14-01 | | | | | | | | | | | |
| TOLERANCE ON FRACTIONS DECIMALS ANGLES | | | | APPROVED S. BRISHKOVSKI | | 11-14-01 | | TITLE LOW G SENSOR ENVELOPE DRAWING | | | | | | | | | |
| | | | | APPROVED D. STROTT | | 11-14-01 | | | | | | | | | | | |
| FRACTIONS DECIMALS ANGLES | | | | | | | | SIZE CODE IDENT NO C 82647 EX3LG20-15A | | | | | | | | | |
| | | | | | | | | | | | | | | | | | |
| | | | | | | | | | | | | | | | | | |
| | | | | SIGNATURES ON FILE. REFER TO ELECTRONIC CHANGE NOTICE | | | | | | | | | | | | | |